

The DiproSalive Oral Fluid Drug Screen Device is a simple one-step test for the detection of drugs of abuse in oral fluid.

Dipro Salive5 Procedures – Refer to package insert for detailed instructions and technical information.

- 1** Remove the blue cap by holding the sides and pulling gently. This will expose the collection pad.



- 2** Open mouth and gently rub the collection pad inside mouth against cheek in a circular motion several (approximately 15–20) times. Make sure to **keep head level**.



- 3** Gently rub the collection pad against the opposite cheek in circular motion several (approximately 15–20) times.

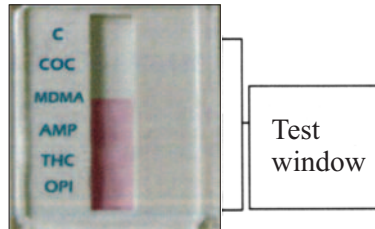


- 4** Gently rub the collection pad on top of the tongue several (approximately 15–20) times. **Do not chew, suck, bite or bend the collection pad.**



- 5** Rub the collection pad underneath the tongue several (approximately 15–20) times.

- 6** Place the collection pad underneath the tongue for approximately 30 seconds to collect saliva. Instruct the donor to hold the device in place with hand. **Sufficient amount of saliva collected is indicated by the flow of the purple red liquid.** (Repeat steps 2–6 until the purple red liquid flows.)



- 7** Remove from mouth as soon as the purple red liquid flows at the test window. **Re-cap** the device.

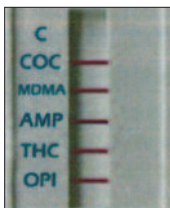


- 8** Lay the device on a flat surface and read results in 5 minutes after removing the device from mouth. See Package Insert.

Interpreting Drugcheck Test Result

Invalid Result

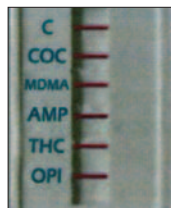
When **no** colored band appears in the **CONTROL (C) region**, the test is **invalid** even if there is a band in the test region. **Repeat** the test with a new device.



Example Interpretation:
COC: Invalid
MDMA: Invalid
AMP: Invalid
THC: Invalid
OPI: Invalid

Negative Result

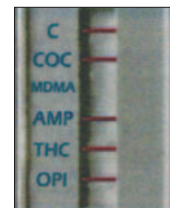
Colored bands should be observed:
• **One in the CONTROL (C) region**
• **One in the specific TEST region**
The color of the test band may be slightly darker or lighter than the control band. Any visible band that can be seen is a **negative** result.



Example Interpretation:
COC: Negative
MDMA: Negative
AMP: Negative
THC: Negative
OPI: Negative

Presumptive Positive Result

A colored band at the **CONTROL (C) region** should be observed. When there is no colored band at the specific **TEST region**, the test is presumptive positive for that particular drug.



Example Interpretation:
COC: Negative
MDMA: **Presumptive Positive**
AMP: Negative
THC: Negative
OPI: Negative